



Cdc23 Polyclonal Antibody

Catalog No	YP-Ab-16677
Isotype	IgG
Reactivity	Human;Mouse;Monkey
Applications	WB;ELISA
Gene Name	CDC23
Protein Name	Cell division cycle protein 23 homolog
Immunogen	The antiserum was produced against synthesized peptide derived from human APC8. AA range:251-300
Specificity	Cdc23 Polyclonal Antibody detects endogenous levels of Cdc23 protein.
Formulation	Liquid in PBS containing 50% glycerol, 0.5% BSA and 0.02% sodium azide.
Source	Polyclonal, Rabbit,IgG
Purification	The antibody was affinity-purified from rabbit antiserum by affinity-chromatography using epitope-specific immunogen.
Dilution	Western Blot: 1/500 - 1/2000. ELISA: 1/20000. Not yet tested in other applications.
Concentration	1 mg/ml
Purity	≥90%
Storage Stability	-20°C/1 year
Synonyms	CDC23; ANAPC8; Cell division cycle protein 23 homolog; Anaphase-promoting complex subunit 8; APC8; Cyclosome subunit 8
Observed Band	69kD
Cell Pathway	intracellular,nucleoplasm,anaphase-promoting complex,cytosol,
Tissue Specificity	Bone marrow,Brain,Duodenum,Epithelium,Pancreas,Placenta,
Function	function:Component of the anaphase promoting complex/cyclosome (APC/C), a cell cycle-regulated ubiquitin ligase that controls progression through mitosis and the G1 phase of the cell cycle.,pathway:Protein modification; protein ubiquitination.,PTM:Phosphorylated. Phosphorylation on Thr-556 occurs specifically during mitosis.,similarity:Belongs to the APC8/CDC23 family.,similarity:Contains 9 TPR repeats.,subunit:The APC/C is composed of at least 11 subunits.,
Background	The protein encoded by this gene shares strong similarity with Saccharomyces cerevisiae Cdc23, a protein essential for cell cycle progression through the G2/M transition. This protein is a component of anaphase-promoting complex (APC), which is composed of eight protein subunits and highly conserved in eukaryotic cells. APC catalyzes the formation of cyclin B-ubiquitin conjugate that is responsible for the ubiquitin-mediated proteolysis of B-type cyclins. This protein



and 3 other members of the APC complex contain the TPR (tetratricopeptide repeat), a protein domain important for protein-protein interaction. [provided by RefSeq, Jul 2008],

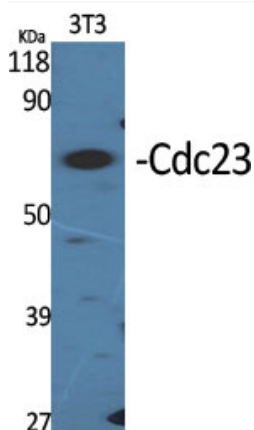
matters needing attention

Avoid repeated freezing and thawing!

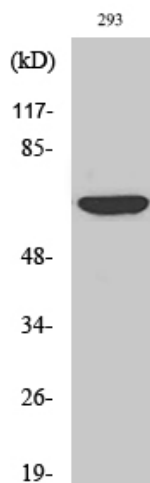
Usage suggestions

This product can be used in immunological reaction related experiments. For more information, please consult technical personnel.

Products Images



Western Blot analysis of various cells using Cdc23 Polyclonal Antibody diluted at 1:2000



Western Blot analysis of COS7 cells using Cdc23 Polyclonal Antibody diluted at 1:2000